

Viruses, water damage, fires, mold, asbestos...

▶ **We're here for you!**

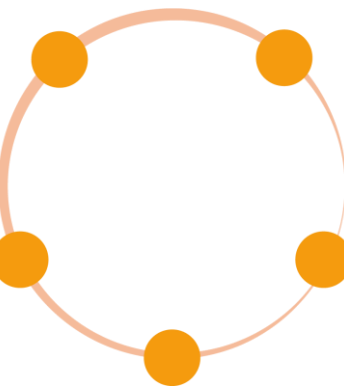
Viruses, spores or mold, asbestos fibers, radon and foundation or water infiltration issues are some of the major concerns expressed by managers of commercial, public or rental buildings.

The CNESST can close your site on grounds of your workers' health and safety.

Indoor air quality can have a detrimental impact on occupants' health.

Problems not addressed in a timely manner can result in significant expense and legal action.

The property value can decrease if problems are not treated in a timely manner.

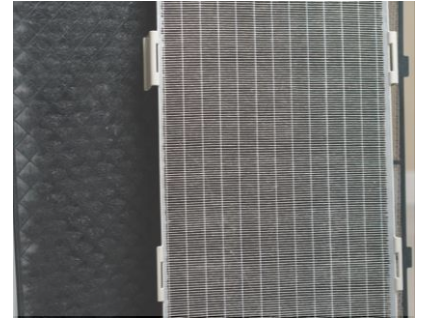


A company may be forced to close for lack of adequate prevention.

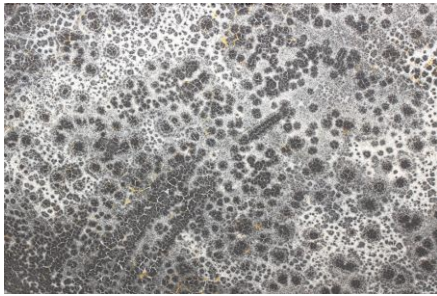
▶ **SOLROC** has the tools and expertise to provide a complete analysis of your building's sanitation and hygiene status.

Analysis and Optimization of Air Exchange Systems

- ▶ Are the **right HEPA** filters in place?
- ▶ Does your **ventilation system** spread germs or kill them?
- ▶ Consider **optimizing your filtration system** to eliminate viruses, bacteria and spores that could contaminate your workspaces.
- ▶ SOLROC will analyze **air renewal** rates and the adequacy of all systems in place, to deliver the appropriate **recommendations** for the best filtration and sanitation systems on the market.



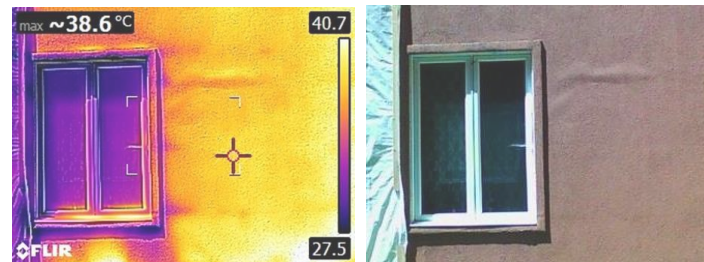
Fungus Amplification Tests (Indoor Hygiene)



- ▶ **Mold and spores** are ubiquitous in the environment.
- ▶ To find out if **quantity, genera and species** present in the environment are problematic, an **amplification test** is required.
- ▶ Our experts will also assess the presence and danger of **strains** that may only be present inside the building.
- ▶ Our reports are often produced at the request of banks or insurance companies.

Infrared Imaging

- ▶ We are equipped with infrared thermography imaging systems able to locate areas in the building envelope where **abnormal humidity** or **heat loss** is present.
- ▶ Our experts identify **insulation or infiltration problems** and suggest **remedial solutions**.



Identification Tests for Allergenic or Toxic Species



- ▶ Depending on their type, **mold and bacteria** are classified according to their **degree of harm or risk of allergy**.
- ▶ We provide the expertise that will allow you to decide on the **habitability of the premises** and the **health risks** of its occupants.
- ▶ SOLROC's expertise guarantees peace of mind for your employees or tenants.



- ▶ SOLROC experts carry out the **counting of Colony Forming Units (CFU)** and **measure the performance** of fungal decontamination processes before and after the fungicidal intervention.
- ▶ Mold **species** are also **identified** and their **harmfulness is assessed**.

Air Testing - Pollutant Characterization

- ▶ Our specialists perform the **most complex air analyses** needed: mold, volatile organic compounds (VOCs), carbon monoxide, dust, asbestos, etc.
- ▶ **Results are interpreted** according to current standards and our experts **guide you** in solving your air quality problems.



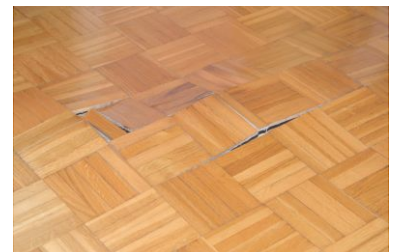
Plans for Mold, Bacterial or Viral Remediation and Asbestos Removal



- ▶ All **mold or asbestos mitigation plans** recommended by our experts are compliant with the New York Protocol or other standards in effect (CNESST, IRSST, EPA, City of Montreal, etc.).
- ▶ We also provide **work supervision** and **follow-ups** on mold decontamination or asbestos removal.

Building Health

- ▶ We are fostering **innovative solutions** regarding building hygiene, namely for **protecting foundation walls against humidity** and in **certifying optimal room air quality**.
- ▶ We also determine **moisture content** in concrete floors or wood flooring for compliance with standards and intended use.

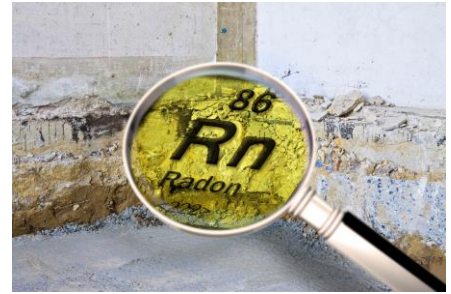


Control During Remediation

- ▶ We perform **air analyses daily** and **at the end of the process**, as required by the CNESST for fungal **decontamination work** and for any other type of decontamination plan.
- ▶ The SOLROC team has the **qualifications, tools** and **experience** to help you achieving remediation in a professional and timely manner.

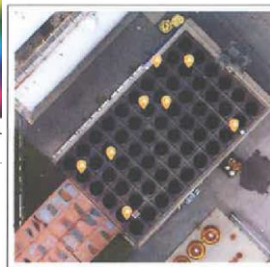
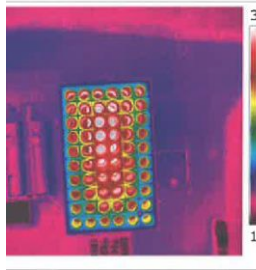
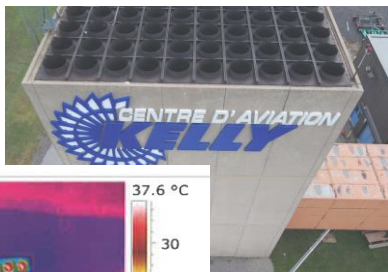
Prevention of Intrusive Gas in New Buildings (Radon, Moisture, Hydrocarbons, Etc.)

- ▶ **Radon** is a major cause of lung cancer. It is found in quantities that **exceed the threshold** set by Health Canada in **10%** of Canadian buildings.
- ▶ SOLROC experts assist engineers and architects in designing buildings compliant with the **new guidelines of the Quebec Construction Code and the 2010 NBC.**
- ▶ These precautions also **minimize moisture and odor problems** in basements.



Inspection of Industrial Roofs using Drone and Infrared Imaging

- ▶ The use of a drone allows us to **compare** high-resolution images captured during the daytime with thermal imaging taken at night.
- ▶ This technique, perfectly mastered by our experts, makes it possible to **characterize all defects of the constituent materials** of large industrial or commercial roofs.
- ▶ It is a **non-destructive method**, complementary to intrusive examination techniques for roof materials.
- ▶ SOLROC thus produces **detailed maps of anomalies** with identified causes or to be investigated subsequently in situ.



Our Mission?

To bring you a range of complementary high-quality expertise!

Established in 1981, SOLROC supports its clients in their construction and rehabilitation projects, with expertise in environment, geotechnical engineering and material quality control.

Our multidisciplinary team of 60 employees is providing you with reliable solutions for risk and cost control, with thousands of completed projects in Quebec, Ontario and Eastern United States.

Since 1981, SOLROC has experienced sustained growth, with sales of CAD 10 million in 2019.



Deleterious Materials
and Ionizing Radiation

→ **Guy Arbour**

P.Eng., Geo., M.A.Sc., Fellow Engineers Canada

T. 514-737-6541 x 129 | M. 438-404-6707

g.arbour@solroc.com